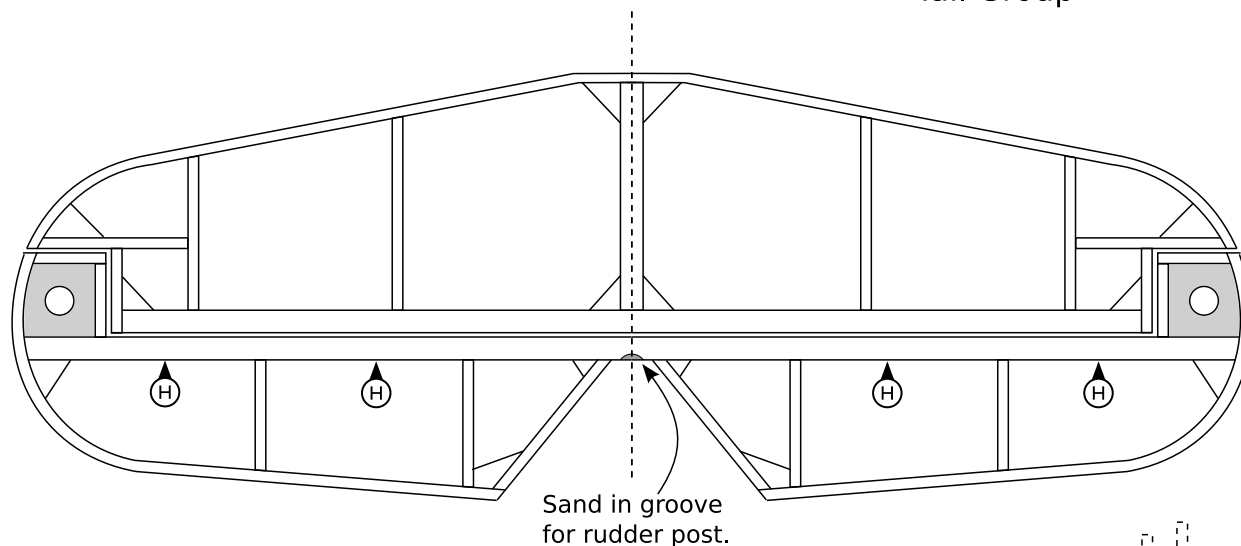


# Hillson F.H. 40 "Slip Wing" Hurricane from VMC MK I Hurricane Kit

## Tail Group

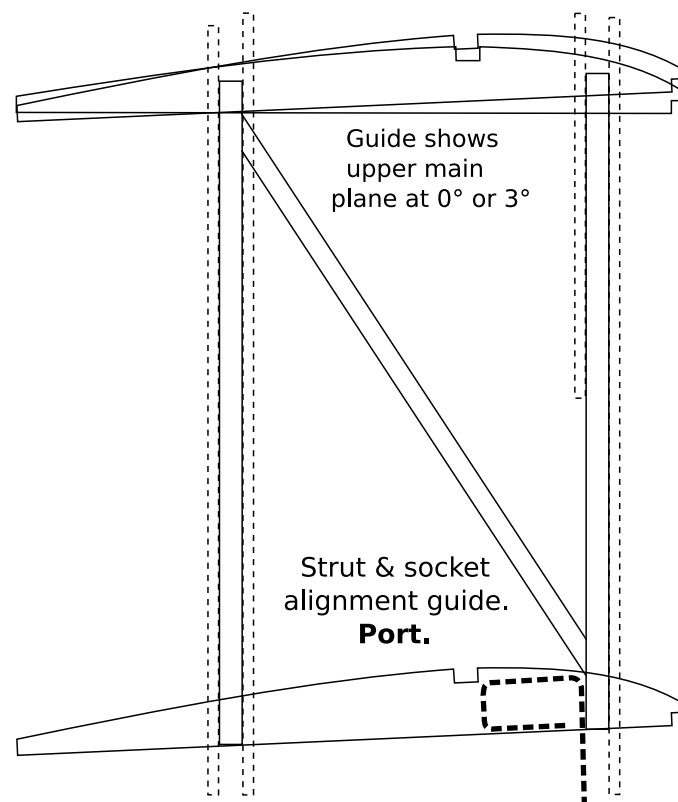


Outlines 1/16" x 1/32" basswood.  
Main spars 1/16" x 1/8" medium balsa.  
Centre rib 1/16" x 1/8" medium balsa  
Ribs 1/16" □ soft balsa.

Ⓜ Hinge points

Infill.  
1/32" sheet, 4mm void.  
Grain at 45° to spar

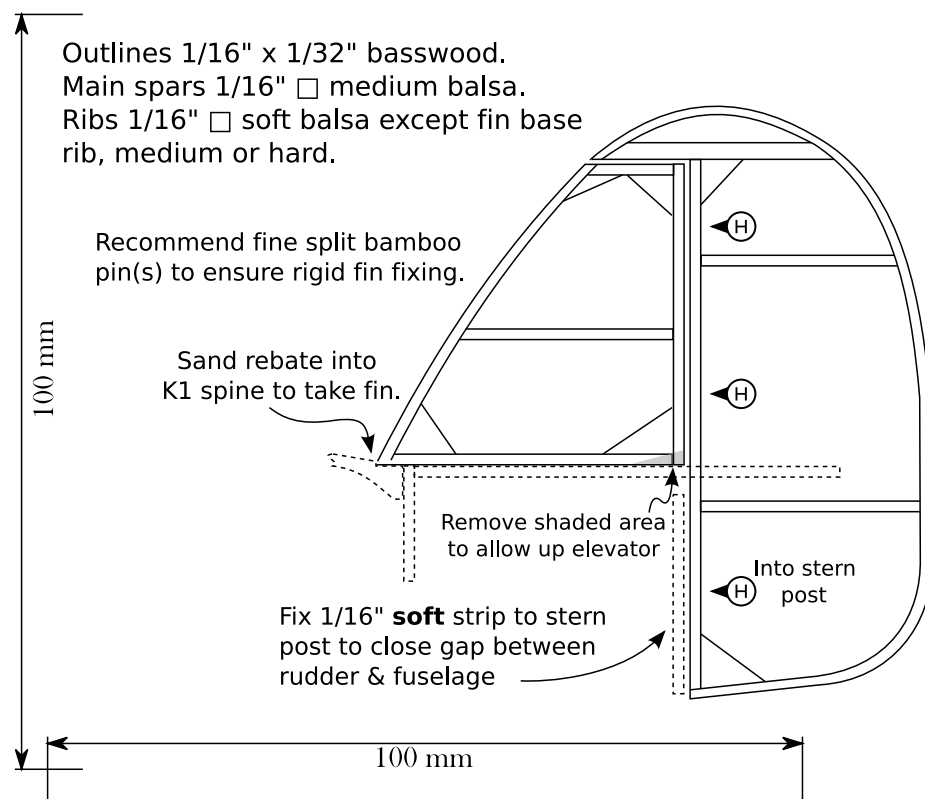
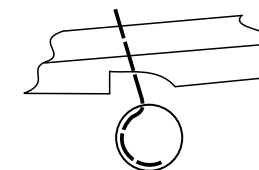
Sand in groove  
for rudder post.



Guide shows  
upper main  
plane at 0° or 3°

Strut & socket  
alignment guide.  
**Port.**

Tail wheel is 24 or 26 SWG  
hook with paper cover.  
See scheme sheet



Outlines 1/16" x 1/32" basswood.  
Main spars 1/16" □ medium balsa.  
Ribs 1/16" □ soft balsa except fin base  
rib, medium or hard.

Recommend fine split bamboo  
pin(s) to ensure rigid fin fixing.

Sand rebate into  
K1 spine to take fin.

Remove shaded area  
to allow up elevator

Fix 1/16" **soft** strip to stern  
post to close gap between  
rudder & fuselage

Ⓜ Into stern  
post

100 mm

100 mm