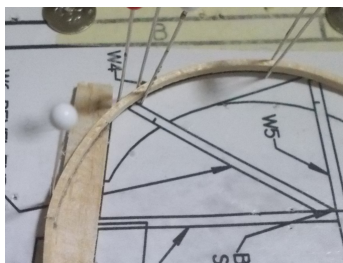
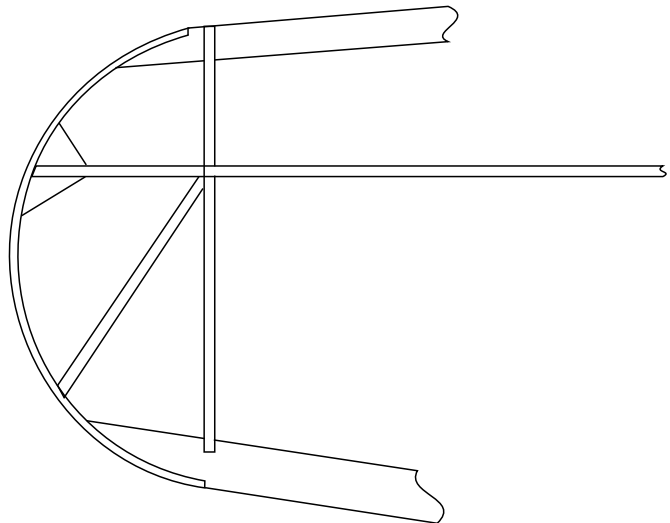
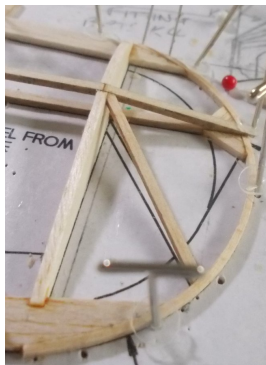
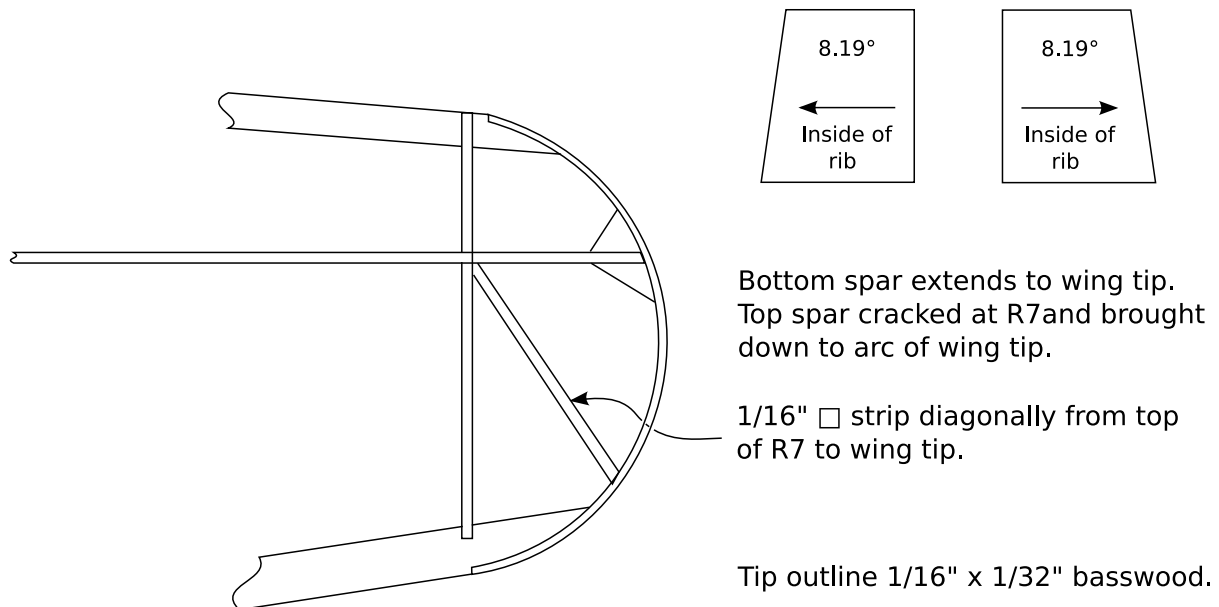
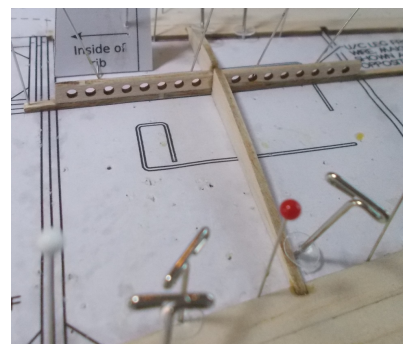


# Hillson F.H. 40 "Slip Wing" Hurricane from VMC MK I Hurricane Kit. Wing Detail



Marking up the TE & LE for cutting  
Remember to notch the TE **before** gluing it in place.

The upper wing LE is not notched. The rib profiles are drawn with a deeper LE rebate than the kit ribs.



**Lower wing.**  
Sand W7 end to dihedral angle.  
Fit R4, then W7 & W8 before fitting R3 & R5.

